

Anti - PAX8

Rabbit clonal antibody

CAT#

DB 261-0.05 (50 µl)
DB 261-0.1 (100 µl)

PRODUCT INFORMATION

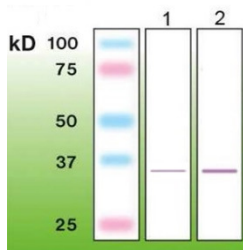
Clone number:	C25-Q	Buffer:	20 mM Tris-HCl, pH 8.0
Uniprot:	Q06710	Stabilizer:	10 mg/ml BSA
Product description:	Rabbit anti-PAX8 clonal IgGs	Preservative:	0.05% Sodium Azide
Basic information:	Major clone of rabbit immunoglobulin corresponding to immunogenic peptide	Storage:	10 µl aliquots at -20°C
Immunogen:	Peptide derived from the internal region of human PAX8 protein. Antibody recognizes the epitope located between Ser209 – Ala227.	Handling:	Avoid repeated freezing and thawing
Species Reactivity:	Human, Rat (Uniprot: P51794), Mouse (Uniprot: Q00288)	Expiration:	24 months from the shipping date
		Applications:	Western blot, ELISA
		Dilution range:	Western blotting – 1:2,000 ELISA – 1:50,000

WESTERN BLOT (WB) PROTOCOL - INSTRUCTION MANUAL

Western immunoblotting solutions:

- Wash buffer: 1x Tris Buffered Saline (TBS); 0.1% Triton X-100
- Blocking buffer: 1xTBS; 0.1% Triton X-100; 5% nonfat dry milk

For western blots, incubate the membrane with antibody diluted in blocking buffer for 2 hours at room temperature.



Anti - PAX8 (DB 261)

Western blot of PAX8: lane 1 – 1.5 µg; lane 2 – 3 µg of recombinant human PAX8 (MyBioSource, MBS 206102. 1-287aa, His tag. MW ~33kDa observed on western blot).

PRECAUTIONS

1. Intended for professional In Vitro Diagnostic use in laboratories.
2. Do not use after expiration date stamped on vial label.
3. Avoid contamination of the reagent.
4. Any discrepancies in the recommended procedures stated in the working protocol may affect the final results.
5. The reagent contains sodium azide (NaN₃) which is highly toxic in higher concentrations. The concentration in the reagent (0.05%) is not considered as hazardous.
6. Disposal of waste material must be conducted in accordance with local regulations.
7. Wear appropriate Personal Protective Equipment to avoid contact with eyes and skin.