

## Anti - TTF-1

### Rabbit clonal antibody

#### CAT#

DB 088-0.05 (50 µl)  
DB 088-0.1 (100 µl)

#### PRODUCT INFORMATION

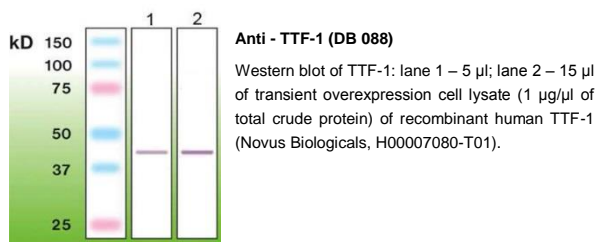
<b>Clone number:</b>	A22-A	<b>Buffer:</b>	20 mM Tris-HCl, pH 8.0
<b>Uniprot:</b>	Human: P43699; Mouse: P50220; Rat: P23441	<b>Stabilizer:</b>	10 mg/ml BSA
<b>Product description:</b>	Rabbit anti-TTF-1 clonal IgGs	<b>Preservative:</b>	0.05% Sodium Azide
<b>Basic information:</b>	Major clone of rabbit immunoglobulin corresponding to immunogenic peptide	<b>Storage:</b>	10 µl aliquots at -20°C
<b>Immunogen:</b>	Peptide derived from N-terminal sequence of human TTF-1. Antibody recognizes the epitope located between Ala40 - Gln55.	<b>Handling:</b>	Avoid repeated freezing and thawing
<b>Species Reactivity:</b>	Human, mouse, rat - tested	<b>Expiration:</b>	24 months from the shipping date
		<b>Applications:</b>	Western blot, Immunoprecipitation, ELISA
		<b>Dilution range:</b>	Western blotting – 1:1,000 ELISA – 1:20,000-1:30,000 Immunoprecipitation – to be tested by user

#### WESTERN BLOT (WB) PROTOCOL - INSTRUCTION MANUAL

##### Western immunoblotting solutions:

- Wash buffer: 1x Tris Buffered Saline (TBS); 0.1% Triton X-100
- Blocking buffer: 1xTBS; 0.1% Triton X-100; 5% nonfat dry milk

For western blots, incubate the membrane with antibody diluted in blocking buffer for 2 hours at room temperature.



#### PRECAUTIONS

1. Intended for professional In Vitro Diagnostic use in laboratories.
2. Do not use after expiration date stamped on vial label.
3. Avoid contamination of the reagent.
4. Any discrepancies in the recommended procedures stated in the working protocol may affect the final results.
5. The reagent contains sodium azide (NaN<sub>3</sub>) which is highly toxic in higher concentrations. The concentration in the reagent (0.05%) is not considered as hazardous.
6. Disposal of waste material must be conducted in accordance with local regulations.
7. Wear appropriate Personal Protective Equipment to avoid contact with eyes and skin.