

## Anti – mdm2

### Rabbit clonal antibody

CAT#		READY TO USE (RTU)		PRODUCT INFORMATION	
<b>CONCENTRATED</b>				<b>Clone:</b>	<b>E22-L</b>
DB 255-0.1	(100 µl)	DB 255-RTU-7	(7 ml)	<b>Buffer:</b>	20 mM Tris-HCl, pH 8.0
DB 255-0.2	(200 µl)	DB 255-RTU-15	(15 ml)	<b>Stabilizer:</b>	20 mg/ml BSA
DB 255-0.5	(500 µl)			<b>Preservative:</b>	0.05% NaN <sub>3</sub>
DB 255-1	(1 ml)			<b>Specificity:</b>	Human
<b>STORAGE AND APPLICATION</b>		<b>READY TO USE (RTU)</b>		<b>Expiration:</b>	24 months from the shipping date
<b>CONCENTRATED</b>				<b>Immunogen:</b>	Peptide derived from region close to the N – terminal sequence of human mdm2. Antibody recognizes the epitope between Gly 132 - Ser 149.
<b>Storage:</b>	+4°C	<b>Storage:</b>	+4°C, Do not freeze!	<b>Cellular localization:</b>	nucleus
<b>Application:</b>	IHC-P, dilution 1:100 - 1:200	<b>Application:</b>	IHC-P, ready to use	<b>Positive control:</b>	liposarcoma
				<b>Protein accession number:</b>	Q00987

#### VENTANA PROTOCOL – INSTRUCTION MANUAL

##### SHORT APPLICATION PROTOCOL FOR VENTANA BENCHMARK SLIDE STAINING SYSTEM

1. Drying (Enter).
2. Heating glass (72°C), incubation 4 min. Drying.
3. Deparafinization (Enter).
4. Heating (72°C) at the medium temperatures. Deparafinization.
5. Prolonged deparafinization (Enter).
6. Cell conditioning (Enter).
7. ULTRA conditioner #1 (Enter).
8. Heating glass (95°C), incubation 8 min. (Cell conditioner #1; buffer CC1).
9. ULTRA CC1 solution application – 36 min. (Enter).
10. Titration (Enter).
11. Hand apply – primary antibody. Incubation 32 min.
12. Nuclear stain (Enter).
13. Hematoxylin application – one drop (nuclear stain). Cover and incubate 8 min.
14. After nuclear stain (Enter).
15. Bluing reagent application, one drop. After nuclear stain, cover and incubate 4 min.

#### LEICA BOND MAX PROTOCOL – INSTRUCTION MANUAL

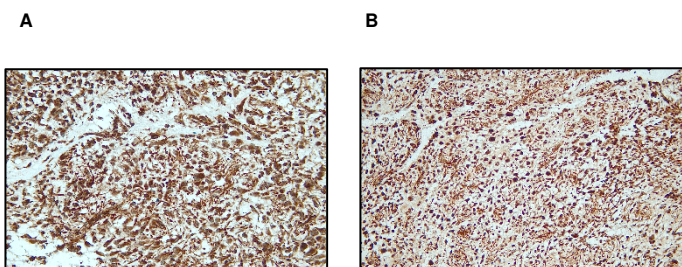
##### SHORT APPLICATION PROTOCOL FOR LEICA BOND MAX SLIDE STAINING SYSTEM

##### Protocol F:

- Incubation of primary antibody / temperature: 30 min. / 20°C
- Epitope retrieval / heating time / temperature: ER2 / 30 min. / 100°C
- Visualization system: BOND Refine DS9800

#### PRECAUTIONS

1. We strongly recommend to use DB Primary Antibody Diluent (catalog number DB D-125, or DB D-250), eventually alternative diluent (containing protease free BSA at the concentrations  $\geq 1\text{mg/ml}$ ) for dilution of concentrated antibodies, otherwise the warranty might be voided.
2. Centrifuge the vial before use.
3. Intended for professional In Vitro Diagnostic use in laboratories.
4. Do not use after expiration date stamped on vial label.
5. Avoid contamination of the reagent.
6. Any discrepancies in the recommended procedures stated in the working protocol may affect the final results.
7. The reagent contains sodium azide (NaN<sub>3</sub>) which is highly toxic in higher concentrations. The concentration in the reagent (0.05%) is not considered as hazardous.
8. Disposal of waste material must be conducted in accordance with local regulations.
9. Wear appropriate Personal Protective Equipment to avoid contact with eyes and skin.



Immunohistochemical staining patterns of formalin fixed and paraffin embedded human liposarcoma tissue (4 µm sections) with Anti – mdm2 (DB 255) monospecific antibody, according to DB Biotech datasheet. The liposarcoma tissues show strong nuclear mdm2 expression. (A) Ventana BenchMark; (B) Leica Bond-Max.