

# Anti - CD15

## Rabbit clonal antibody

### CAT#

#### CONCENTRATED

DB 211-0.1 (100 µl)  
 DB 211-0.2 (200 µl)  
 DB 211-0.5 (500 µl)  
 DB 211-1 (1 ml)

#### READY TO USE (RTU)

DB 211-RTU-7 (7 ml)  
 DB 211-RTU-15 (15 ml)

### STORAGE AND APPLICATION

#### CONCENTRATED

**Storage:** +4°C  
**Application:** IHC-P,  
 dilution 1:100 - 1:200

#### READY TO USE (RTU)

**Storage:** +4°C; Do not freeze!  
**Application:** IHC-P,  
 ready to use

### PRODUCT INFORMATION

**Clone:** E26-A  
**Buffer:** 20 mM Tris-HCl, pH 8.0  
**Stabilizer:** 20 mg/ml BSA  
**Preservative:** 0.05% NaN<sub>3</sub>  
**Specificity:** Human  
**Expiration:** 24 months from the shipping date  
**Immunogen:** Peptide derived from N-terminal region of human CD15. Antibody recognizes the epitope between Pro28 - Gly49.

**Cellular localization:** membrane  
**Positive control:** Hodgkin's lymphoma tissue, spleen tissue  
**Protein accession number:** P22073

### IHC-P PROTOCOL – INSTRUCTION MANUAL

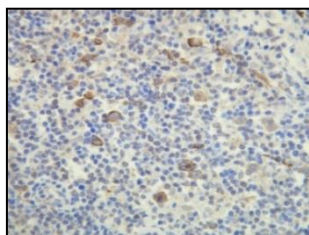
1. Deparaffinize the section in 3 changes of xylene, 10 minutes each.
2. Wash the section in 96%, 80% and 70% ethyl alcohol for 10 minutes each.
3. Rinse in distilled water, 2 x 5 minutes.
4. Block the endogenous peroxidase by incubating the tissue in 3% hydrogen peroxide (H<sub>2</sub>O<sub>2</sub>) for 10 minutes.
5. Wash in distilled water, 2 x 5 minutes.
6. For antigen retrieval use one of the following procedures: **A)** Immerse the slide in Tris-EDTA buffer, pH 9.0, 0.05% Tween- 20\*, and incubate at 96-98°C in water bath for 20-30 minutes, or **B)** Immerse the slide in citrate buffer, pH 6.0, 0.05% Tween-20\*\*, and incubate at 96-98°C in water bath for 20-30 minutes. Better results were obtained with the citrate buffer, pH 6.0. (Alternatively adjust to your own protocol, keeping the required pH).
7. Remove the staining to room temperature and let the slide to cool down in antigen retrieval buffer for 15 minutes.
8. Rinse in distilled water, 2 x 5 minutes.
9. Wash in PBS (phosphate buffer saline, pH 7.0-7.5) supplemented with 0.05% of Tween-20 (**buffer A**), 2 x 5 min..
10. **CONCENTRATED:**  
 Incubate the section with primary antibody the **dilution 1:100 - 1:200** for 1 hour in the closed wet chamber.  
**READY TO USE (RTU):**  
 Incubate the section with primary antibody (**ready to use**) for 1 hour in a closed wet chamber.
11. Wash 3 x 5 minutes with buffer A.
12. Apply the secondary antibody (the protocol depends on the supplier), and proceed to standard immunohistochemistry protocol (HRP - Peroxide - DAB).  
 Micropolymer-HRP detection kit rabbit/mouse dual of DB Biotech is suggested (<http://www.dbbiotech.com/products/detection-system.html>).
13. Wash 3 x 5 minutes with buffer A.
14. Apply the chromogen (DAB), 1 - 3 minutes.
15. Wash in water, 2 x 5 minutes.
16. Stain in hematoxylin for 5 minutes.
17. Wash in distilled water, 3 x 2 minutes.
18. Mount the slide for observation.

\* **Tris-EDTA Buffer (10mM Tris Base, 1mM EDTA solution, 0.05% Tween-20,pH 9.0):**

Tris ----- 1.21 g; EDTA ----- 0.37 g; Distilled water ----- 1000 ml  
 Mix to dissolve in 700 ml of distilled water. Adjust pH to 9.0 with 1M HCl and then add 0.5 ml of Tween-20 and mix well. Adjust the final volume to 1 liter with distilled water. Store this solution at room temperature for 3 months or at +4°C for longer storage.

\*\* **Citrate Buffer (10mM Citric Acid, 0.05% Tween-20, pH 6.0):**

Citric acid (anhydrous) ----- 1.92 g; Distilled water ----- 1000 ml  
 Mix to dissolve in 700 ml of distilled water. Adjust pH to 6.0 with 1M NaOH and then add 0.5 ml of Tween-20 and mix well. Adjust the final volume to 1 liter with distilled water.



Expression of CD15 in HRS cells of classical Hodgkin lymphoma. Formalin fixed, paraffin embedded human tissue (4 µm section) stained with anti-CD15 monospecific clonal antibody (DB 211) according to related DB Biotech datasheet.

### PRECAUTIONS

1. **We strongly recommend to use DB Primary Antibody Diluent (catalog number DB D-125, or DB D-250), eventually alternative diluent (containing protease free BSA at the concentrations ≥ 1mg/ml) for dilution of concentrated antibodies, otherwise the warranty might be voided.**
2. **Centrifuge the vial before use.**
3. Intended for professional In Vitro Diagnostic use in laboratories.
4. Do not use after expiration date stamped on vial label.
5. Avoid contamination of the reagent.
6. Any discrepancies in the recommended procedures stated in the working protocol may affect the final results.
7. The reagent contains sodium azide (NaN<sub>3</sub>) which is highly toxic in higher concentrations. The concentration in the reagent (0.05%) is not considered as hazardous.
8. Disposal of waste material must be conducted in accordance with local regulations.
9. Wear appropriate Personal Protective Equipment to avoid contact with eyes and skin.