

# Anti - PR (Progesterone Receptor)

## Rabbit clonal antibody

### CAT#

#### CONCENTRATED

DB 059-0.1 (100 µl)  
DB 059-0.2 (200 µl)  
DB 059-0.5 (500 µl)  
DB 059-1 (1 ml)

#### READY TO USE (RTU)

DB 059-RTU-7 (7 ml)  
DB 059-RTU-15 (15 ml)

### STORAGE AND APPLICATION

#### CONCENTRATED

**Storage:** +4°C  
**Application:** IHC-P,  
dilution 1:100 - 1:400

#### READY TO USE (RTU)

**Storage:** +4°C, Do not freeze!  
**Application:** IHC-P,  
ready to use

### PRODUCT INFORMATION

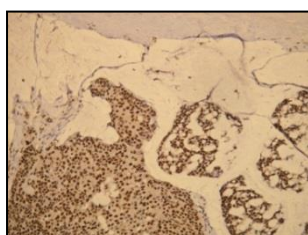
**Clone:** P21-S  
**Buffer:** 20 mM Tris-HCl, pH 8.0  
**Stabilizer:** 20 mg/ml BSA  
**Preservative:** 0.05% NaN<sub>3</sub>  
**Specificity:** Human  
**Expiration:** 24 months from the shipping date  
**Immunogen:** Peptide derived from C-terminus of inhibitory domain (IF) of human progesterone receptor. Antibody recognizes the epitope between Arg264 - Ala282.

**Cellular localization:** nucleus  
**Positive control:** human breast carcinoma tissue  
**Protein accession number:** P06401-1, P06401-2

### IHC-P PROTOCOL – INSTRUCTION MANUAL

1. Deparaffinize the section in 3 changes of xylene, 10 minutes each.
2. Wash the section in 96%, 80% and 70% ethyl alcohol for 10 minutes each.
3. Rinse in distilled water, 2 x 5 minutes.
4. Block the endogenous peroxidase by incubating the tissue in 3% hydrogen peroxide (H<sub>2</sub>O<sub>2</sub>) for 10 minutes.
5. Wash in distilled water, 2 x 5 minutes.
6. For antigen retrieval: Immerse the slide in Tris-EDTA buffer\*, pH 9.0 and incubate at 95-97°C in water bath for 25 minutes.
7. Remove the staining to room temperature and let the slide to cool (in Tris-EDTA buffer, pH 9.0) for 15 minutes.
8. Rinse in distilled water, 2 x 5 minutes.
9. Wash in PBS (phosphate buffer saline, pH 7.0-7.5) supplemented with 0.05% of Tween-20 (**buffer A**), 2 x 5 min..
10. **CONCENTRATED:**  
Incubate the section with primary antibody at the **dilution 1:100 - 1:400** for 1 hour in the closed wet chamber.  
**READY TO USE (RTU):**  
Incubate the section with primary antibody (**ready to use**) for 1 hour in a closed wet chamber.
11. Wash 3 x 5 minutes with buffer A.
12. Apply the secondary antibody (the protocol depends on the supplier), and proceed to standard immunohistochemistry protocol (HRP - Peroxide - DAB). Micropolymer-HRP detection kit rabbit/mouse dual of DB Biotech is suggested (<http://www.dbbiotech.com/products/detection-system.html>).
13. Wash 3 x 5 minutes with buffer A.
14. Apply the chromogen (DAB), 1 - 3 minutes.
15. Wash in water, 2 x 5 minutes.
16. Stain in hematoxylin for 5 minutes.
17. Wash in distilled water, 3 x 2 minutes.
18. Mount the slide for observation.

\* **Tris-EDTA Buffer (10mM Tris Base, 1mM EDTA solution, 0.05% Tween-20, pH 9.0):**  
Tris ----- 1.21 g; EDTA ----- 0.37 g; Distilled water ----- 1000 ml  
Mix to dissolve in 700 ml of distilled water. Adjust pH to 9.0 with 1M HCl and then add 0.5 ml of Tween-20 and mix well. Adjust the final volume to 1 liter with distilled water.  
Store this solution at room temperature for 3 months or at +4°C for longer storage.



Diffuse and strong progesterone receptor expression in mucinous breast carcinoma, stained with anti-PR (DB 059) monospecific antibody. Formalin fixed, paraffin embedded human tissue (4 µm section) stained according to related DB Biotech datasheet.

### PRECAUTIONS

1. We strongly recommend to use DB Primary Antibody Diluent (catalog number DB D-125, or DB D-250), eventually alternative diluent (containing protease free BSA at the concentrations ≥ 1mg/ml) for dilution of concentrated antibodies, otherwise the warranty might be voided.
2. Centrifuge the vial before use.
3. Intended for professional In Vitro Diagnostic use in laboratories.
4. Do not use after expiration date stamped on vial label.
5. Avoid contamination of the reagent.
6. Any discrepancies in the recommended procedures stated in the working protocol may affect the final results.
7. The reagent contains sodium azide (NaN<sub>3</sub>) which is highly toxic in higher concentrations. The concentration in the reagent (0.05%) is not considered as hazardous.
8. Disposal of waste material must be conducted in accordance with local regulations.
9. Wear appropriate Personal Protective Equipment to avoid contact with eyes and skin.