

DATA SHEET

(Instruction manual)

Anti - p38 β FITC

Rabbit clonal antibody - For Flow Cytometry Application

Cat. #: DB 1040 (100 tests)

Product information

Clone number: P12-E

Product description: FITC Rabbit Anti-Human p38 β

Reactivity: Human (Hu)

Isotype: Rabbit IgG

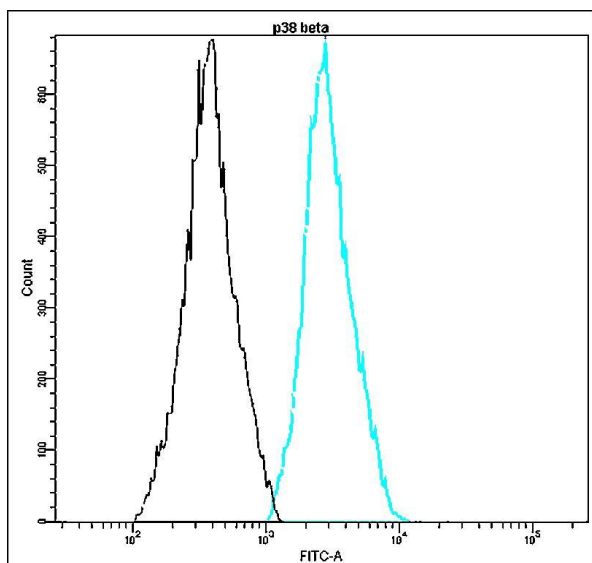
Formulation: Aqueous buffer solution containing 10mg/ml of BSA and 0.05% sodium azide.

Preparation: The antibody was prepared by in vitro cloning technology, and the monospecific product was conjugated with FITC under optimal conditions. The solution is free of unconjugated FITC and unconjugated antibody.

Storage: Store undiluted at 4°C, protect from prolonged exposure to light. Do not freeze.

Expiration: 24 months from the shipping date

Volume per test: 10 μ l



Profile of p38 β expression in human Hek293 cell line analyzed by the BD FACSCanto II.

Hek293 cells were fixed, permeabilized and stained with anti-p38 β FITC (blue, 10 μ l per test) or with an isotype control (black).

Important Notes

This antibody detects intracellular antigen (cells of interest must be permeabilized).

Optimal dilution should be determined by the end user.

Use 1×10^6 cells in a 100 μ l experimental sample (a test).

This product is for in vitro use only, research or diagnostic applications.

Caution: product contains sodium azide.