

Anti - CTRP7

Rabbit clonal antibody

CAT#

DB 019-0.05 (50 µl)
DB 019-0.1 (100 µl)

PRODUCT INFORMATION

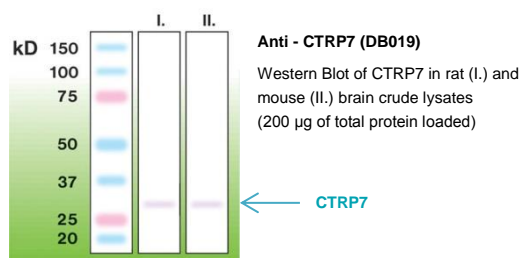
Clone number:	K14-S	Buffer:	20 mM Tris-HCl, pH 8.0
Uniprot:	Human: Q9BXJ2; Mouse: Q8BVD7; Rat: G5BGB9	Stabilizer:	10 mg/ml BSA
Product description:	Rabbit anti - CTRP7 (adiponectin paralog; Complement C1q, Tumor necrosis factor α -Related Protein 7) clonal IgGs	Preservative:	0.05% Sodium Azide
Basic information:	Major clone of rabbit immunoglobulin corresponding to immunogenic peptide	Storage:	10 µl aliquots at -20°C
Immunogen:	Peptide derived from internal sequence of human CTRP7. Antibody recognizes the epitope located between Thr220 - Ala231.	Handling:	Avoid repeated freezing and thawing
Species reactivity:	Human, mouse, rat - tested	Expiration:	24 months from the shipping date
		Applications:	Western blot, ELISA
		Dilution range:	Western blotting – 1:5,000 ELISA – 1:20,000-1:50,000

WESTERN BLOT (WB) PROTOCOL - INSTRUCTION MANUAL

Western immunoblotting solutions:

- Wash buffer: 1x Tris Buffered Saline (TBS); 0.2% Tween-20
- Blocking buffer: 1xTBS; 0.2% Tween-20; 8% nonfat dry milk

For western blots, incubate the membrane with antibody diluted in blocking buffer for 2 hours at room temperature



PRECAUTIONS

1. Intended for professional In Vitro Diagnostic use in laboratories.
2. Do not use after expiration date stamped on vial label.
3. Avoid contamination of the reagent.
4. Any discrepancies in the recommended procedures stated in the working protocol may affect the final results.
5. The reagent contains sodium azide (NaN₃) which is highly toxic in higher concentrations. The concentration in the reagent (0.05%) is not considered as hazardous.
6. Disposal of waste material must be conducted in accordance with local regulations.
7. Wear appropriate Personal Protective Equipment to avoid contact with eyes and skin.