

DATA SHEET

(Instruction manual)

Anti - Akt1-pSer473 FITC

Rabbit clonal antibody - For Flow Cytometry Application

Cat. #: DB 1093 (100 tests)

Product information

Clone number: D17-G

Product description: FITC Rabbit Anti-Human Akt1-pSer473

Reactivity: Human (Hu)

Isotype: Rabbit IgG

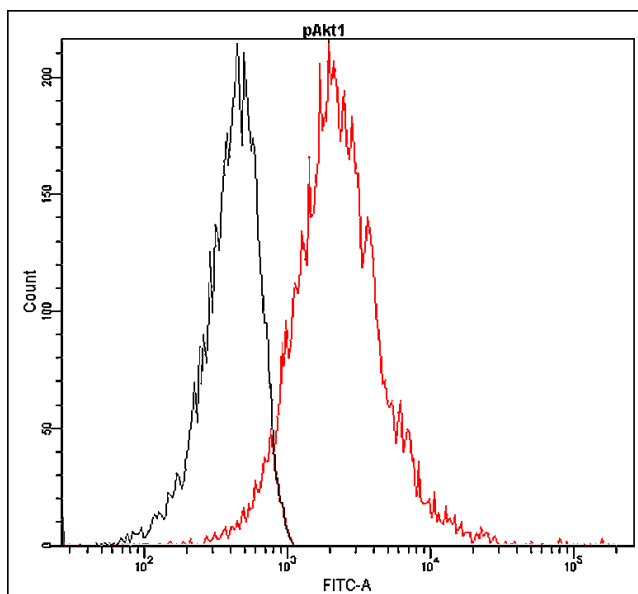
Formulation: Aqueous buffer solution containing 10mg/ml of BSA and 0.05% sodium azide.

Preparation: The antibody was prepared by in vitro cloning technology, and the monospecific product was conjugated with FITC under optimal conditions. The solution is free of unconjugated FITC and unconjugated antibody.

Storage: Store undiluted at 4°C, protect from prolonged exposure to light. Do not freeze.

Expiration: 24 months from the shipping date

Volume per test: 10 µl



Profile of pSer473-Akt1 expression in human blood lymphocytes analyzed by the BD FACSCanto II.

Blood cells of patient with myeloma were fixed, permeabilized and stained with anti-Akt1-pSer473 FITC (red, used 10 µl per test) or with an isotype control (black).

Important Notes

This antibody detects intracellular antigen (cells of interest must be permeabilized).

Optimal dilution should be determined by the end user.

Use 1×10⁶ cells in a 100 µl experimental sample (a test).

This product is for in vitro use only, research or diagnostic applications.

Caution: product contains sodium azide.