

# DATA SHEET

(Instruction manual)

## Anti - CD23 FITC

*Rabbit clonal antibody - For Flow Cytometry Application*

Cat. #: DB 1016 (100 tests)

### Product information

**Clone number:** S25-H

**Product description:** FITC Rabbit Anti-Human CD23

**Reactivity:** Human (Hu)

**Isotype:** Rabbit IgG

**Formulation:** Aqueous buffer solution containing 10mg/ml of BSA and 0.05% sodium azide.

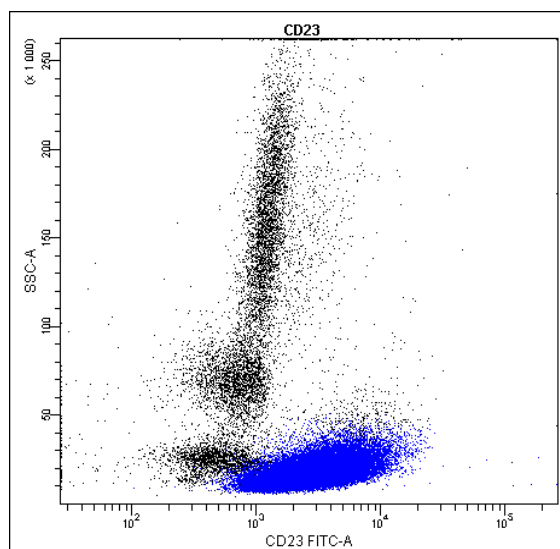
**Preparation:** The antibody was prepared by in vitro cloning technology, and the monospecific product was conjugated with FITC under optimal conditions. The solution is free of unconjugated FITC and unconjugated antibody.

**Storage:** Store undiluted at 4°C, protect from prolonged exposure to light. Do not freeze.

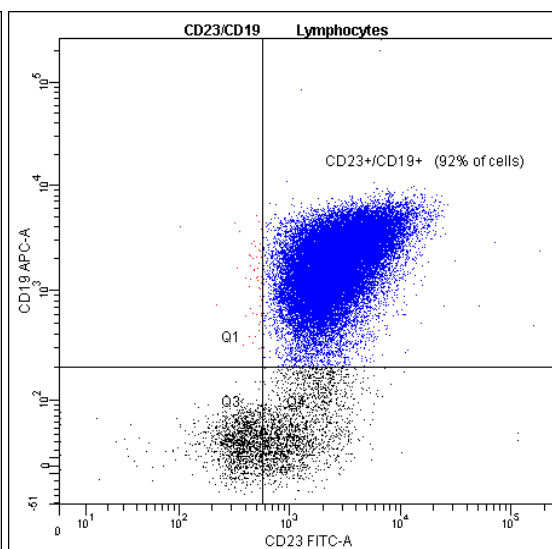
**Expiration:** 24 months from the shipping date

**Volume per test:** 10 µl

**A.**



**B.**



### Profile of CD23 expression in human B-CLL peripheral blood cells analyzed by the BD FACSCanto II.

Blood cells of patient with B-CLL (B-cell chronic lymphocytic leukemia) were stained with anti-CD23 FITC (blue, 10 µl per test) (A.), and with anti-human CD19 APC (B.).

### Important Notes

This antibody detects surface antigen.

Optimal dilution should be determined by the end user.

Use  $1 \times 10^6$  cells in a 100 µl experimental sample (a test).

This product is for in vitro use only, research or diagnostic applications.

Caution: product contains sodium azide.