

# DATA SHEET

(Instruction manual)

## Anti - Estrogen Receptor FITC

*Rabbit clonal antibody - For Flow Cytometry Application*

Cat. #: DB 1015 (100 tests)

### Product information

**Clone:** H17-A

**Product description:** FITC Rabbit Anti-Human ER

**Reactivity:** Human (Hu)

**Isotype:** Rabbit IgG

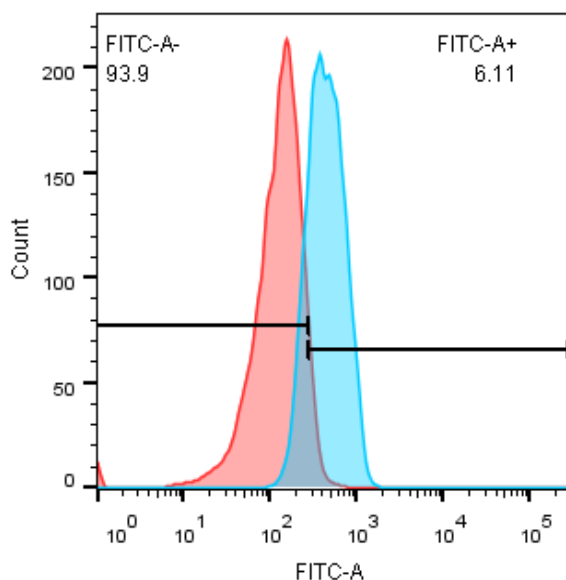
**Formulation:** Aqueous buffer solution containing 10mg/ml of BSA and 0.05% sodium azide.

**Preparation:** The antibody was prepared by in vitro cloning technology, and the monospecific product was conjugated with FITC under optimal conditions. The solution is free of unconjugated FITC and unconjugated antibody.

**Storage:** Store undiluted at 4°C, protect from prolonged exposure to light. Do not freeze.

**Expiration:** 24 months from the shipping date

**Volume per test:** 10 µl



**Profile of Estrogen Receptor expression in MCF-7 cell line\*.**  
MCF-7 cells were fixed, permeabilized and stained with anti-ER FITC (blue, 10 µl per test) or with an isotype control (red).

*\*Kindly performed and provided by Mariana Bustamante Eduardo from Department of Clinical Research (DCR), University of Bern, Switzerland.*

### Important Notes

This antibody detects intracellular antigen (cells of interest must be permeabilized).

Optimal dilution should be determined by the end user.

Use 1×10<sup>6</sup> cells in a 100 µl experimental sample (a test).

This product is for in vitro use only, research or diagnostic applications.

Caution: product contains sodium azide.