

# DATA SHEET

(Instruction manual)

## Anti - PKC $\beta$ I FITC

*Rabbit clonal antibody - For Flow Cytometry Application*

**Cat. #:** DB 1002 (100 tests)

### Product information

**Clone:** N20-N

**Product description:** FITC Rabbit Anti-Human PKC $\beta$ I

**Reactivity:** Human (Hu)

**Isotype:** Rabbit IgG

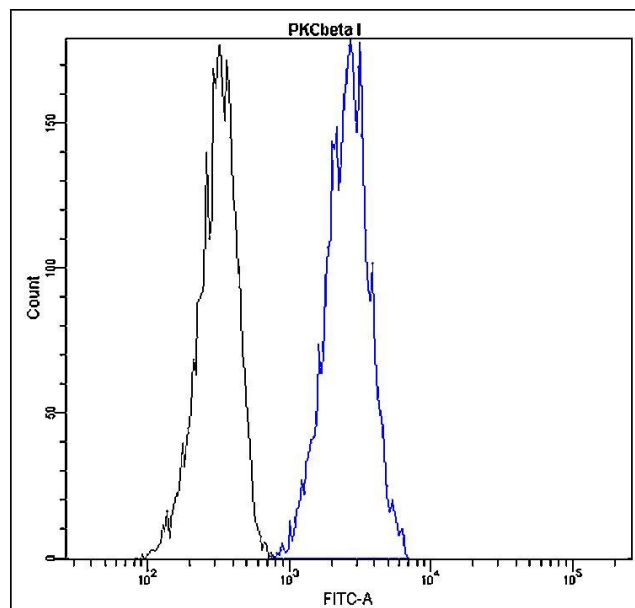
**Formulation:** Aqueous buffer solution containing 10mg/ml of BSA and 0.05% sodium azide.

**Preparation:** The antibody was prepared by in vitro cloning technology, and the monospecific product was conjugated with FITC under optimal conditions. The solution is free of unconjugated FITC and unconjugated antibody.

**Storage:** Store undiluted at 4°C, protect from prolonged exposure to light. Do not freeze.

**Expiration:** 24 months from the shipping date

**Volume per test:** 10  $\mu$ l



### Profile of PKC $\beta$ I expression in peripheral blood lymphocytes analyzed by the BD FACSCanto II.

Blood cells of healthy control were fixed, permeabilized and stained with anti-PKC $\beta$ I FITC (blue, 10  $\mu$ l per test) or with an isotype control (black).

### Important Notes

This antibody detects intracellular antigen (cells of interest must be permeabilized).

Optimal dilution should be determined by the end user.

Use 1  $\times$  10<sup>6</sup> cells in a 100  $\mu$ l experimental sample (a test).

This product is for in vitro use only, research or diagnostic applications.

Caution: product contains sodium azide.