

# DATA SHEET

(Instruction manual)

## Rabbit IgG FITC

### Isotype Control - For Flow Cytometry Application

Cat. #: DB 1000 (100 tests)

#### Product information

**Product description:** FITC Rabbit IgG – Isotype Control

**Reactivity:** Isotype control

**Isotype:** Rabbit IgG

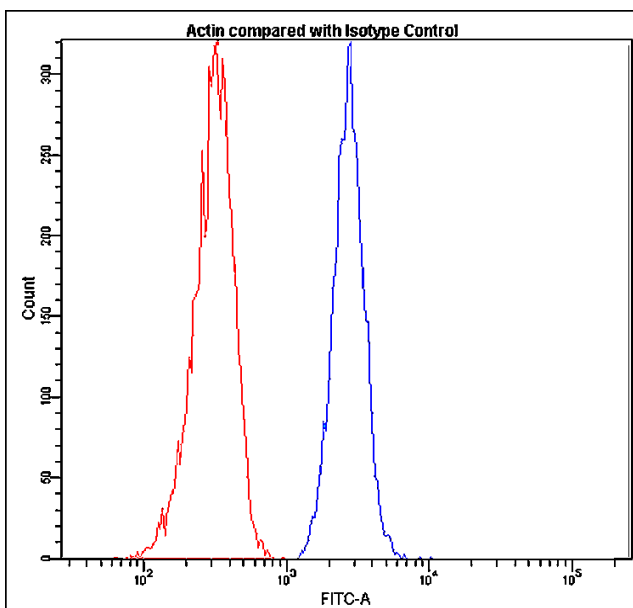
**Formulation:** Aqueous buffer solution containing 10mg/ml of BSA and 0.05% sodium azide.

**Preparation:** The pure fraction of rabbit IgGs was isolated from rabbit serum prior to immunization. The rabbit IgGs were conjugated with FITC under optimal conditions. The solution is free of unconjugated FITC.

**Storage:** Store undiluted at 4°C, in the dark. Do not freeze.

**Expiration:** 24 months from the shipping date

**Volume per test:** 10 µl



**Profile of peripheral blood lymphocytes analyzed by the BD FACSCanto II.**

Flow cytometric analysis of human lymphocytes, using DB1013 Actin FITC (blue; 10 µl per test) compared to Rabbit IgG-FITC isotype control (red).

#### Important Notes

Optimal dilution should be determined by the end user.

Use  $1 \times 10^6$  cells in a 100 µl experimental sample (a test).

This product is for in vitro use only, research or diagnostic applications.

Caution: product contains sodium azide.